



Live your  
*mark...*

PROJECT BY





**4BHK & 5BHK**  
*signature living*

**30** Storey

**3** Iconic Tower

**30+** Amenitiess



New Science City Road



FIRST FLOOR





A path through nature,  
A step toward *better living...*



Where every  
detail *flows...*



Iconic Living,  
Timeless *Style...*



TYPICAL FLOOR  
3RD TO 28TH

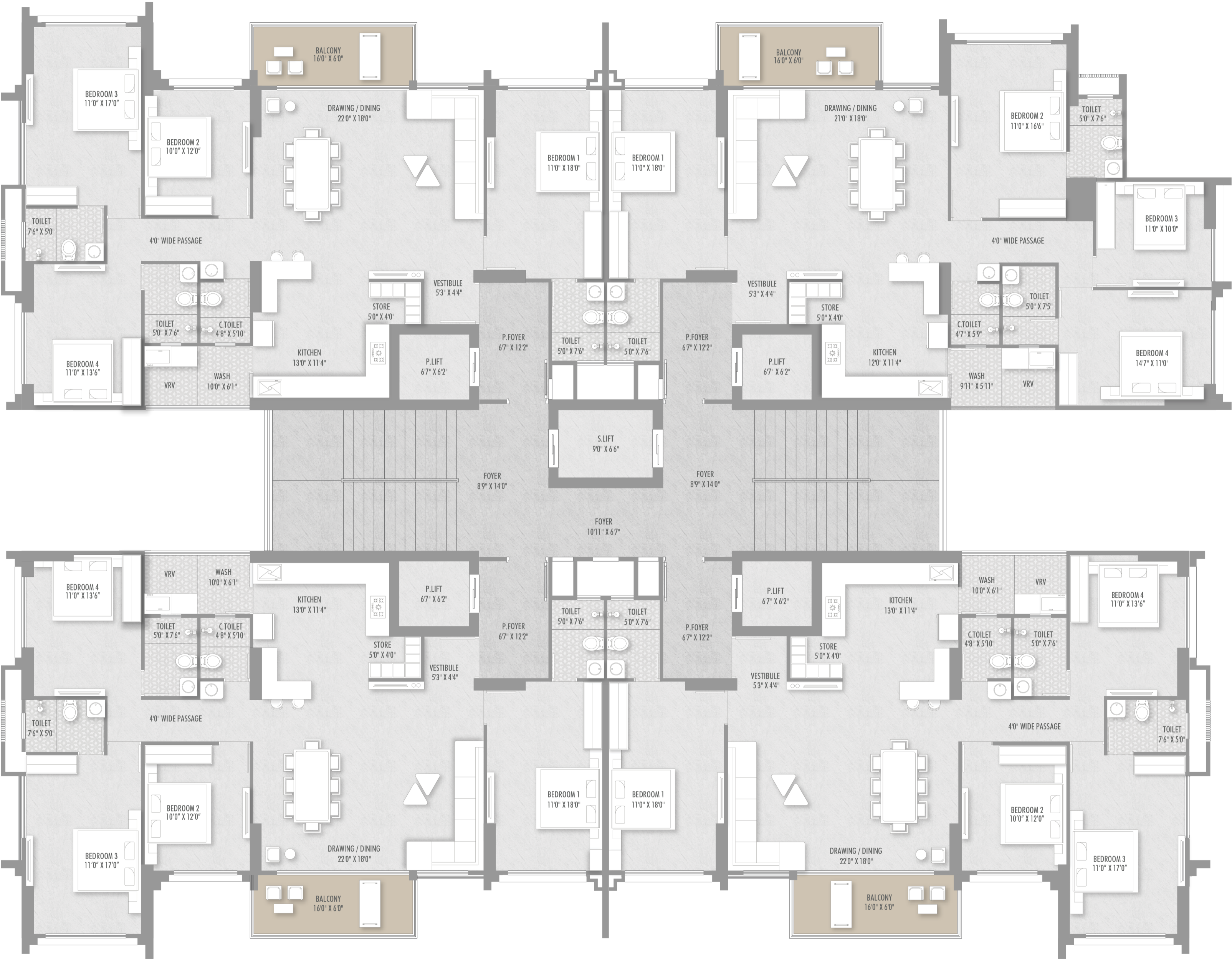




A hidden realm of comfort,  
carved under nature's canopy

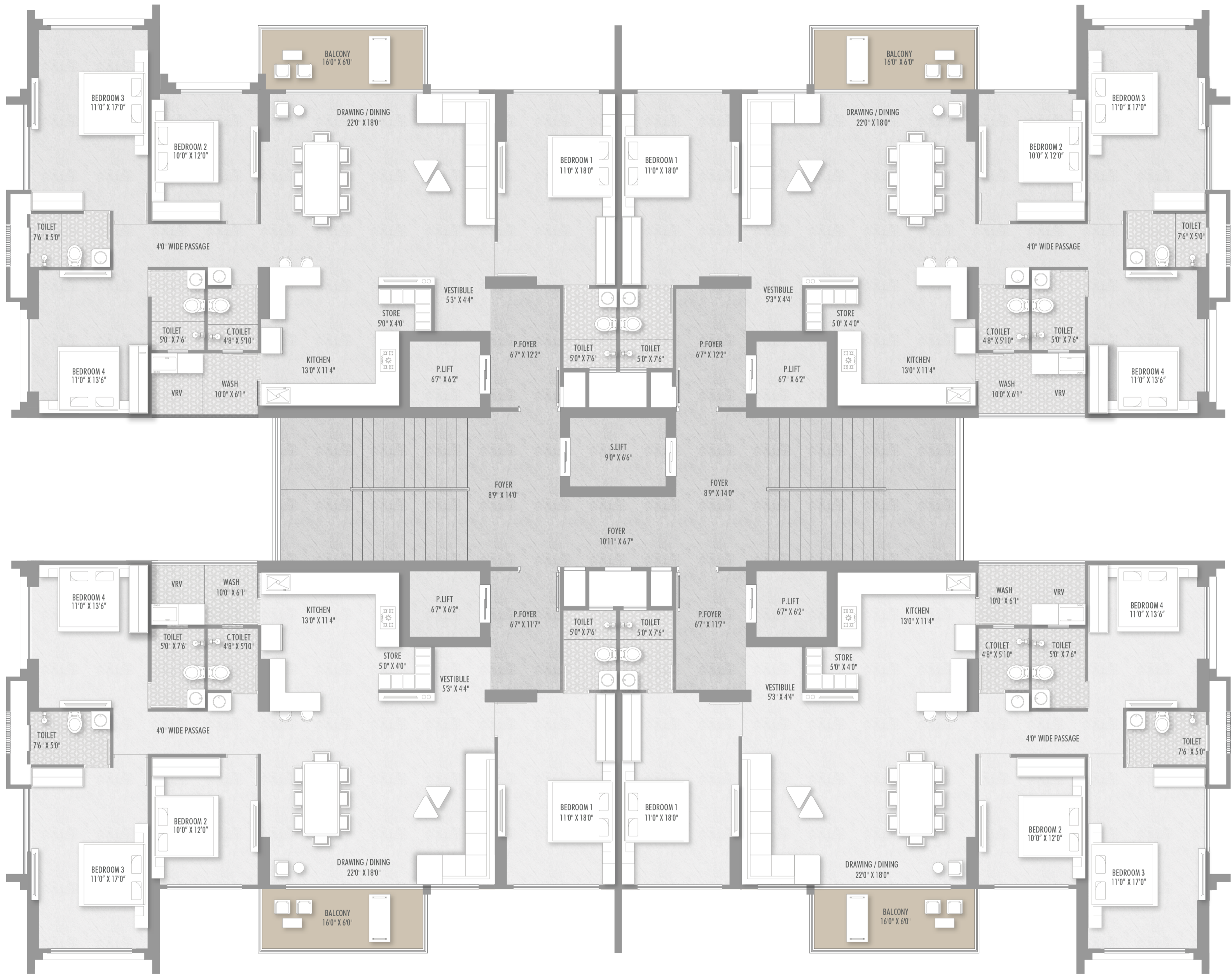


# BLOCK A TYPICAL FLOOR PLAN





**BLOCK B  
TYPICAL  
FLOOR PLAN**

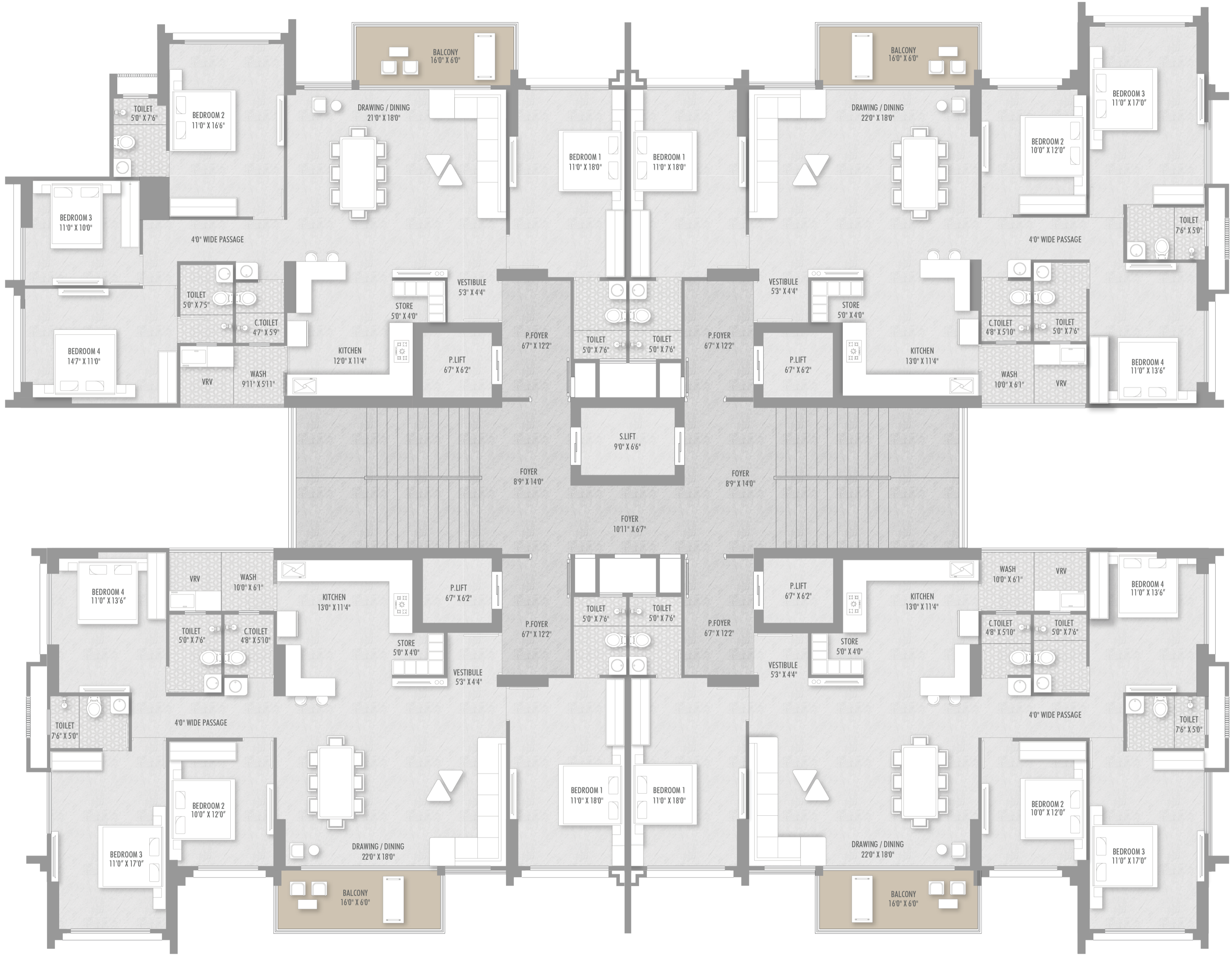




Where every step leads to  
a new shade of serenity



**BLOCK C  
TYPICAL  
FLOOR PLAN**



UNIT PLAN  
TYPE A



UNIT PLAN  
TYPE B





**Amenities crafted beneath**  
nature's beautiful pathway

*beyond limits.*  
Beyond imagination.





# BLOCK A - TYPICAL 29TH FLOOR PLAN





# BLOCK A - TYPICAL 30TH FLOOR PLAN





Where calm *reflects*  
and life unfolds

29TH FLOOR  
UNIT PLAN - TYPE A



30TH FLOOR  
UNIT PLAN - TYPE A



Where Stunning Views  
Become Everyday Living



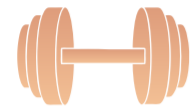
29TH FLOOR  
UNIT PLAN - TYPE B



30TH FLOOR  
UNIT PLAN - TYPE B



HIGH-END  
AMENITIES



GYMNASIUM



BANQUET HALL



INDOOR GAMES  
AREA



SENIOR CITIZEN  
ZONE



JOGGIN TRACK



SALON



VALET  
PARKING



DAYCARE  
FACILITY



SWIMMING POOL  
WITH DECK



CAFE



DOUBLE-HEIGHTED  
ENTRANCE FOYER



BOX  
CRICKET



24 HOUR  
POWER BACKUP



SOLAR ENERGY  
FACILITY



HIGH-SPEED  
ELEVATOR



NO VEHICLE  
ZONE



EV CHARGING  
PROVISIONS



LIBRARY/  
CO-WORKING SPACE



DOUBLE-LEVEL  
SECURITY SYSTEM



DEDICATED DROP-OFF/  
PICKUP ZONES



VISITOR  
PARKING AREA



70% OPEN  
GREEN SPACE

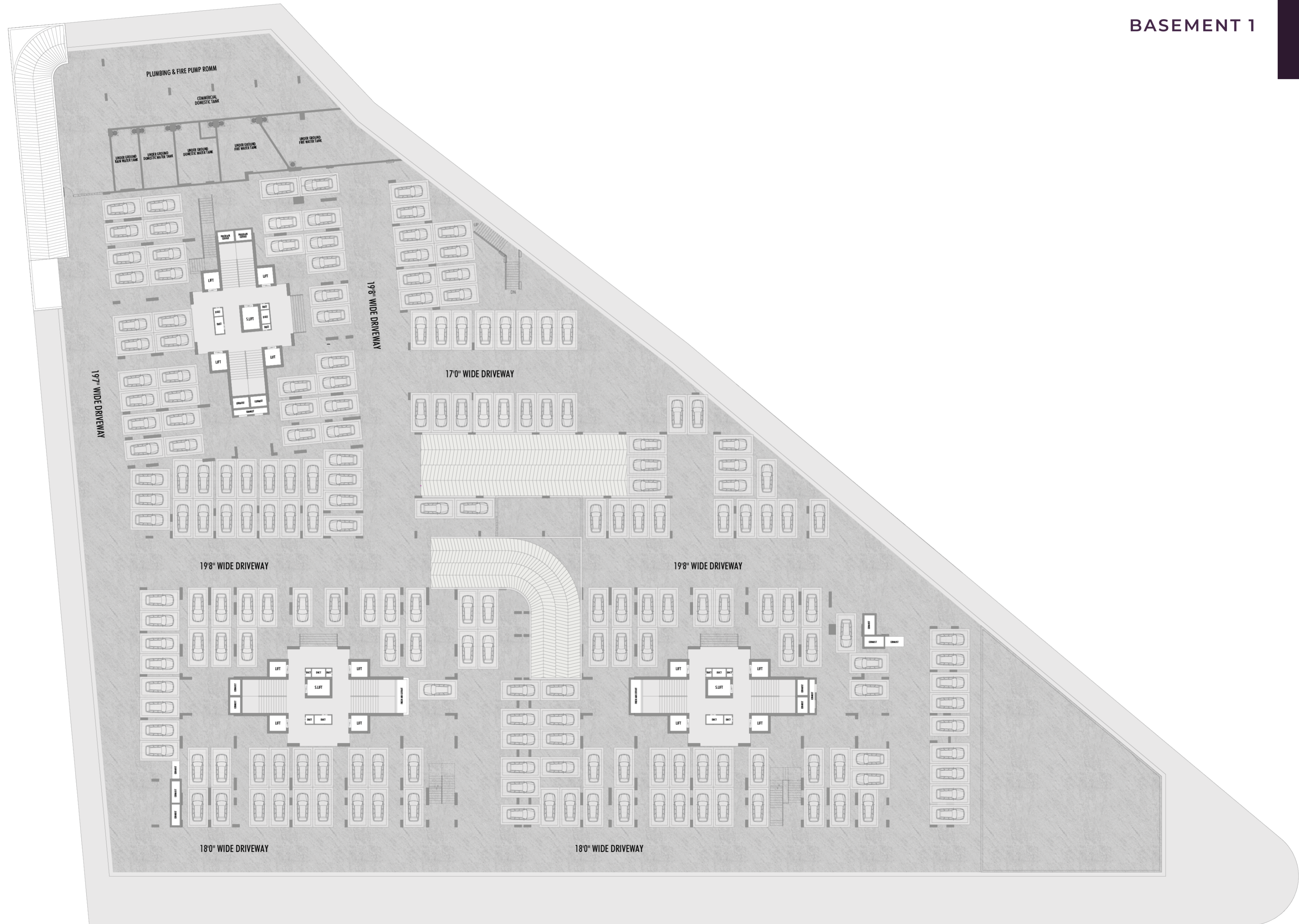


MEDICAL  
CENTER



11 FEET CEILING  
HEIGHT IN APARTMENTS

BASEMENT 1



*Grace*  
in every detail.



